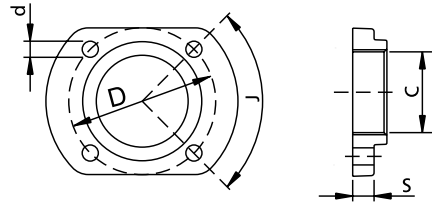


# 4.5 Flanges and chains

## KFL Flange

### General characteristics

Flange in GJL-250 cast iron painted with epoxy coating



Cast iron flange to transform the delivery port from GAS 1 1/2" to GAS 2". Designed to be coupled to electric pumps with DN32 PN6 outlet flange.

All product images are indicative only

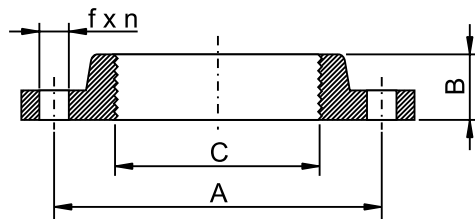
	C	d	D	J	S	kg
KFL 32/G50	G 2"	M12	90	90°	15	0.75

All weights and dimensions are indicative only

Dimensions in mm

### General characteristics

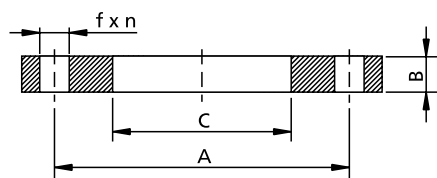
Threaded and welded flanges PN6 and PN 10-16 in accordance with standard EN 1092-1



	A	B	C	f	n	kg
KFL / G50 PN10-16	125	30	2"	18	4	2.8
KFL / G65 PN10-16	145	30	2 1/2"	18	4	3.5
KFL / G80 PN10-16	160	35	3"	18	8	4.2
KFL / G100 PN10-16	180	40	4"	18	8	4.9

All weights and dimensions are indicative only

Dimensions in mm



	A	B	C	f	n	kg
KFL / 150 PN10-16	240	25	168	22	8	7.6
KFL / 200 PN10	295	25	216	22	8	10.0
KFL / 250 PN10	350	30	267	22	12	13.4
KFL / 300 PN10	400	30	318	22	12	14.8

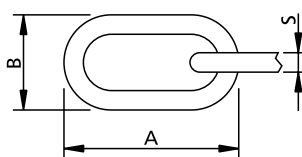
All weights and dimensions are indicative only

Dimensions in mm

## KAT Chains

### General characteristics

Stainless steel or galvanized steel chains.  
Suitable for moving pumps from tanks and wells.



All weights and dimensions are indicative only

Dimensions in mm

material	dimensions			weight (gr/m)	max load (*) (kg)
	D	d	s		
AISI 316	33	19.5	5	482	325
AISI 316	51	30.5	8	1250	700
Fe 430	51	30.5	8	1205	650
Fe 430	71.5	44.5	12	2895	1500

(\*) Uncertified approximate loads